

Ludham Boathouse Piled Solution June 2011

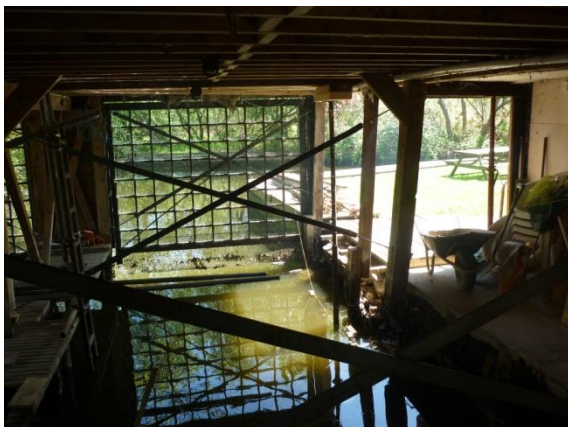
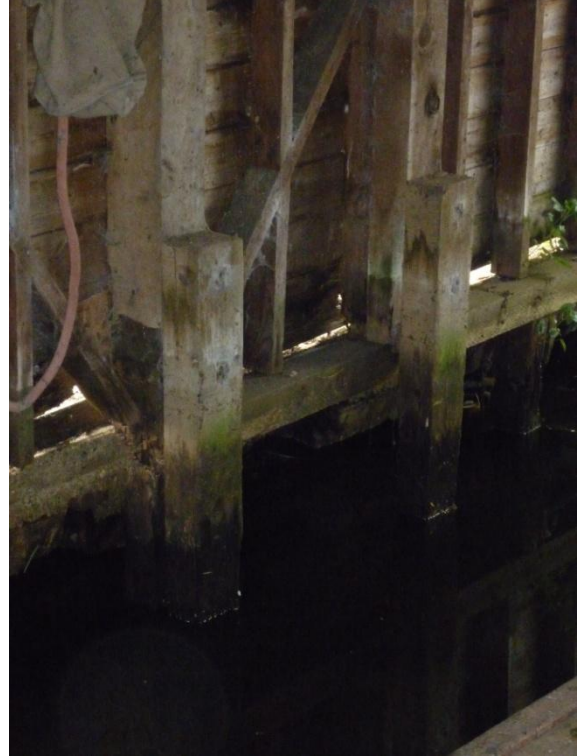
Main Contractor

G T Rochester Plant Ltd. was contacted by a structural engineer enquiring how to install bearing piles to a failing structure with poor access low head room over water. Working with our client G T Rochester Plant Ltd's solution was to install bracing and support to the building remove the cladding and using pullieblocks drop hammer and a piling winch install bearing piles to a known set

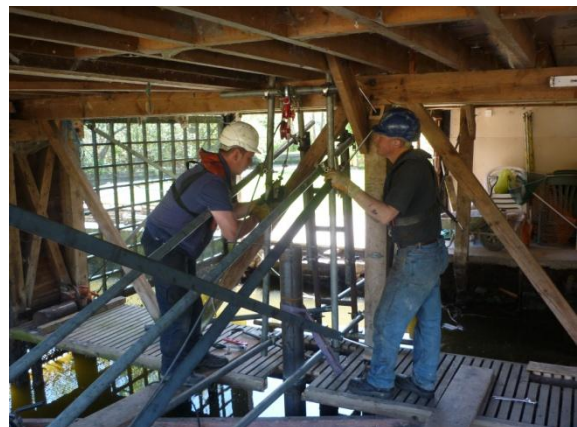


Above a thatched three bed roomed timber framed holiday cottage with a boat dock underneath

Right the original hard wood bearing piles had failed and been replaced by soft wood 'stilts' the replacement soft wood timbers were also in a bad state of decay



Installation of diagonal cross bracing



Installing a bottom driven pile with 150kg hammer (the man on the right is 5'9" tall)



Using pulley blocks and bracing GTRP were able to install the bearing piles to a calculated set



Using pulley blocks and bracing GTRP were able to install the bearing piles to a calculated set



The mini piling rig standing outside of the building with the drop hammer wire running through pulley blocks

